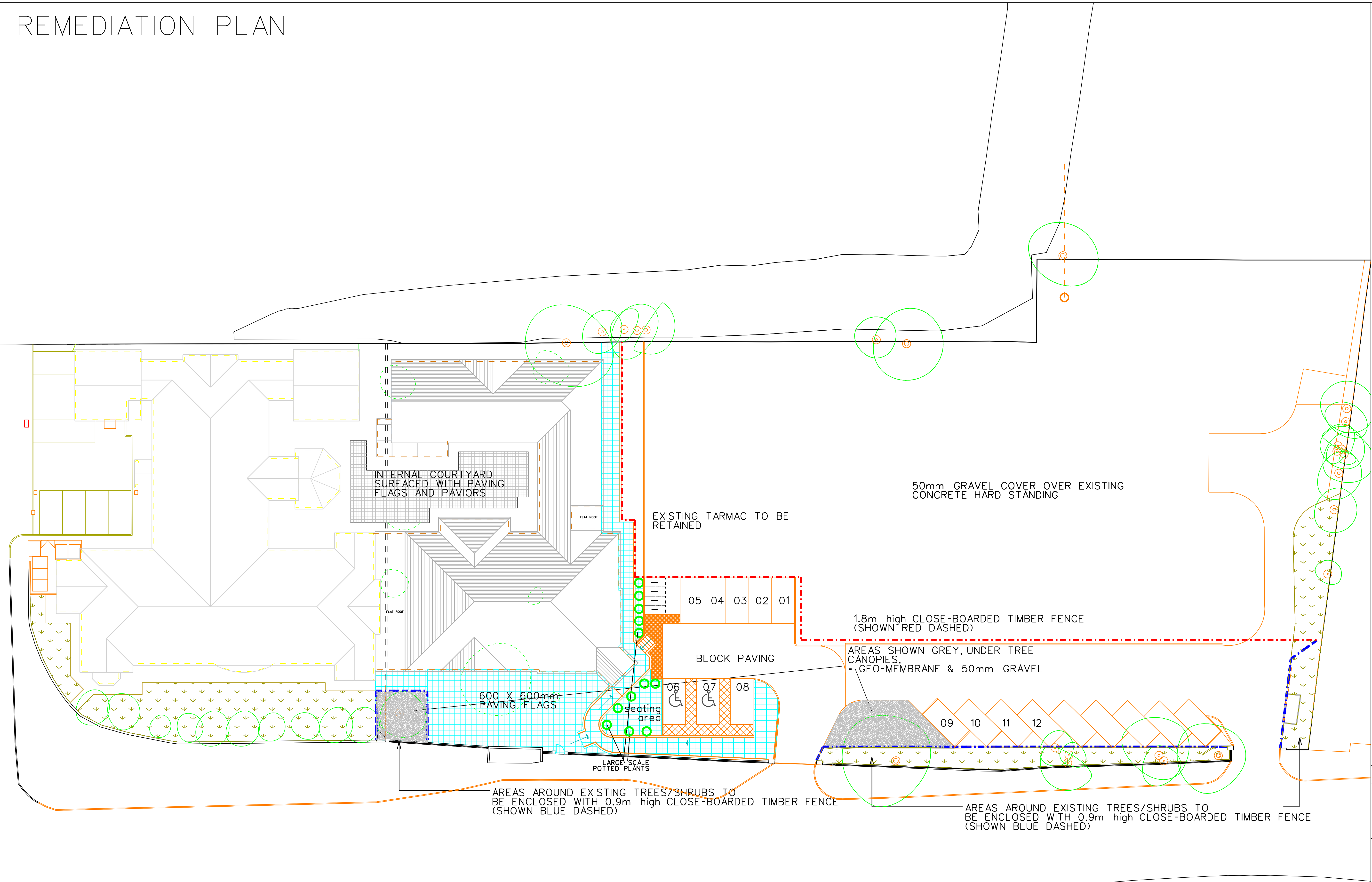
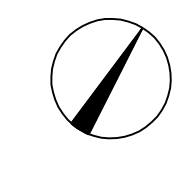


REMEDIATION PLAN

REVISION DATE / DESCRIPTION

- REVISION 'A' - 30.03.15
 - NEW TREES REMOVED
 - SOIL HEAP CLARIFIED
 - EAST AREA COVERAGE REVISED
- REVISION 'B' - 30.07.15
 - PLANTED AREAS REPLACED WITH PAVING
 - EXISTING BOUNDARY PLANTED AREAS FENCED IN
- REVISION 'C' - 13.08.15
 - CAR PARKING INCREASED
- REVISION 'D' - 18.08.15
 - protective area around existing planted areas increased
- REVISION 'E' - 20.08.15
 - ANNOTATION ADDED
- REVISION 'F' - 09.11.15
 - AS BUILT DRAWING



REVISION	NORTH
F	

STAGE - PLANNING

PROJECT
 PROPOSED EXTENSION AND INTERNAL ALTERATIONS @ WINDSOR CARE HOME VICTORIA ROAD, HEBBURN, NE31 1YQ.

DRAWING
 REMEDIATION PLAN

PROJECT NO. 2890	DRAWING NO. C-11	REVISION
DATE MAR '15	SCALES 1:200@A1	DRAWN BY B.K.

MARIO MINICHELLA ARCHITECTS

UNIT 4, WITNEY WAY,
 HI-TECH VILLAGES,
 GOLDON BUSINESS PARK
 TYNESIDE, NE25 9PE
 T: 0191 3882227
 M: WWW.M-M-A.NET
 E: INFO@M-M-A.NET

M	M
A	LTD

THIS DRAWING IS COPYRIGHT OF MARIO MINICHELLA LIMITED NOT TO BE SCALED ALL DIMENSIONS TO BE CHECKED ON SITE

